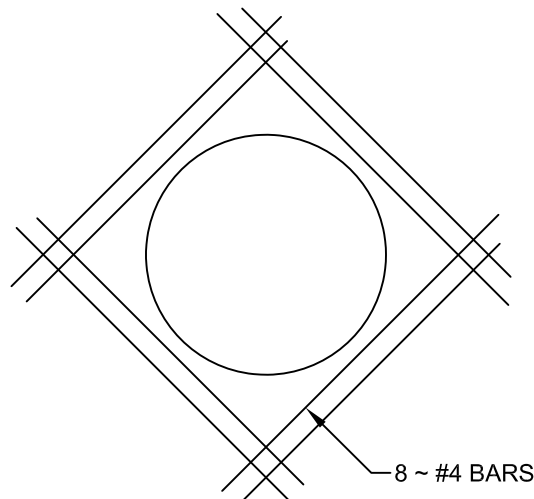


### PIPE FLUSH WITH INVERT



**NOTES:**

1. CONCRETE FOR STRUCTURE SHALL BE CLASS "A," 3,000 P.S.I. AT 28 DAYS.
2. ALL EXPOSED EDGES SHALL BE CHAMFERED  $\frac{3}{4}$ ".
3. REINFORCING STEEL SHALL BE NEW BILLET STEEL, INTERMEDIATE GRADE, ASTM. A-15 THE DEFORMATION SHALL CONFORM TO ASTM. A-305.
4. ALL DIMENSIONS RELATING TO REINFORCING STEEL ARE TO CENTER OF BARS.
5. ALL BARS INTERCEPTING MANHOLE OPENING AND REINFORCED CONCRETE PIPE SHALL BE FIELD-CUT.
6. WHERE LAPPING OF BARS IS REQUIRED, A MINIMUM LAP OF 33 DIAMETERS SHALL BE USED.
7. INVERT TO BE SHAPED WITH CONCRETE FILL (3,000 P.S.I. MIN.) TO EFFECT DRAINAGE TO OUTLET PIPE. COST SUBSIDIARY TO INLETS, MANHOLES AND JUNCTION BOXES.
8. CONCRETE COLLARS ARE SUBSIDIARY TO INLETS, MANHOLES AND JUNCTION BOX.

<b>The City of San Marcos</b> Engineering and Capital Improvements	CURRENT AS OF <b>1/1/2022</b>	<b>CONCRETE COLLAR FOR DRAINAGE PIPE</b>	
RECORD COPY SIGNED BY <hr style="width: 80%; margin: 0;"/> <b>LAURIE MOYER, P.E.</b>	1/1/2020 <hr style="width: 80%; margin: 0;"/> ADOPTED	THE ARCHITECT/ENGINEER ASSUMES RESPONSIBILITY FOR APPROPRIATE USE OF THIS STANDARD.	STANDARD NO. <b>508S-CC-SM</b> 1 OF 1