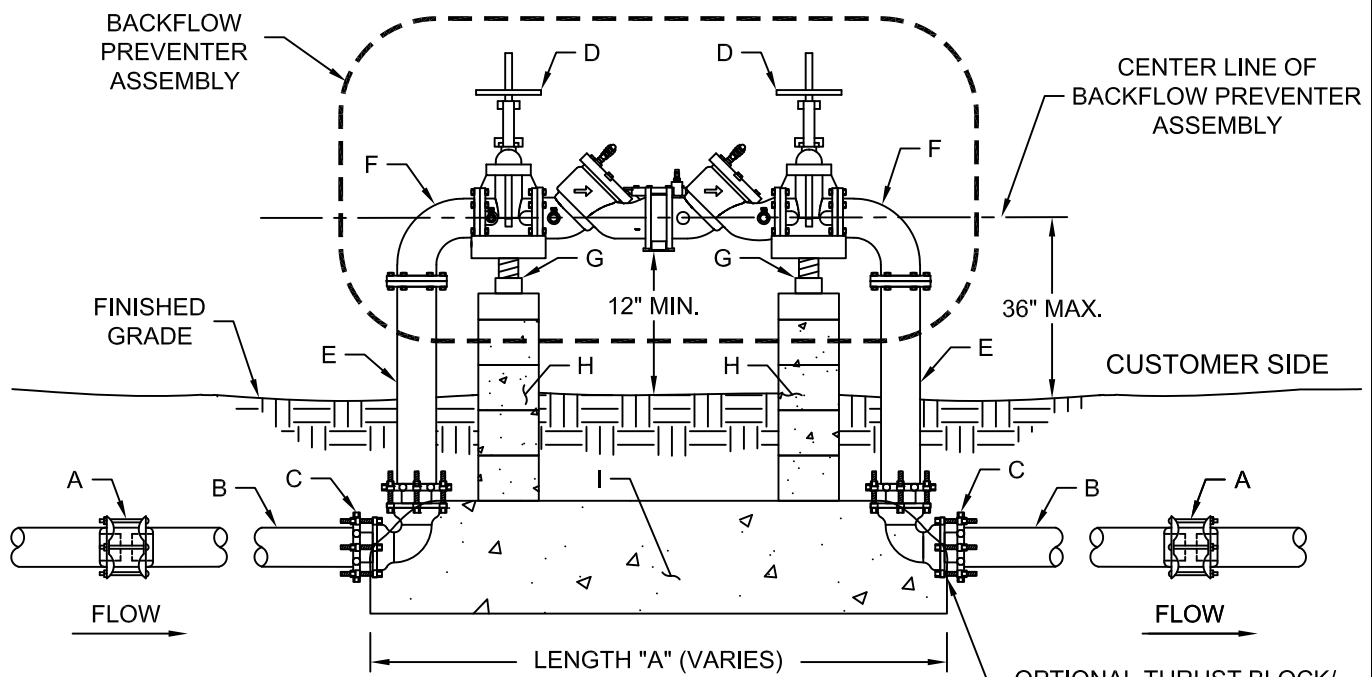


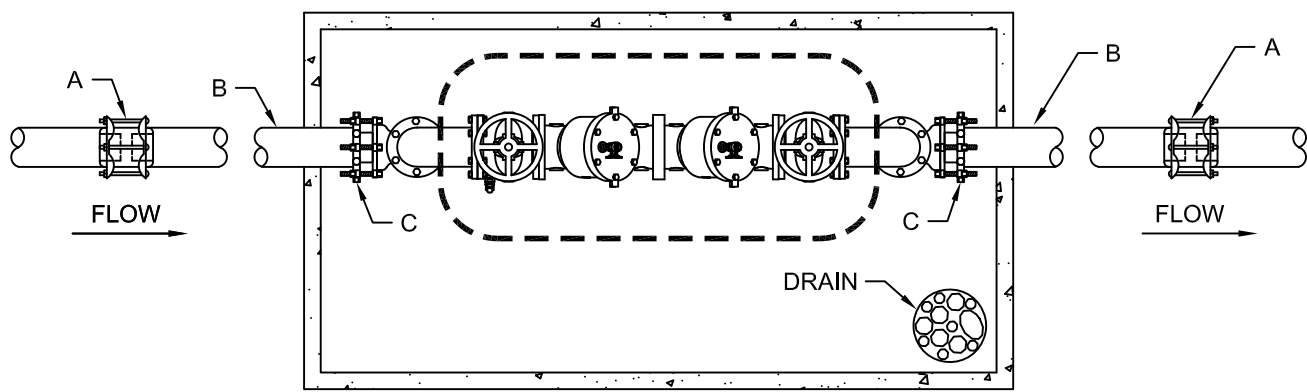
PROPERTY LINE OR EASEMENT



PROFILE VIEW
(ABOVE GROUND)

OPTIONAL THRUST BLOCK/
FOUNDATION NOT TO BE
PLACED OVER FLANGES

PROPERTY LINE OR EASEMENT



PLAN VIEW
(ABOVE GROUND)

<p>The City of San Marcos Engineering and Capital Improvements</p>	<p>CURRENT AS OF 1/1/2022</p>	<p>DOUBLE CHECK ASSEMBLY 3" - 10"</p>	
<p>RECORD COPY SIGNED BY LAURIE MOYER, P.E.</p>	<p>1/1/2022 ADOPTED</p>	<p>THE ARCHITECT/ENGINEER ASSUMES RESPONSIBILITY FOR APPROPRIATE USE OF THIS STANDARD.</p>	<p>STANDARD NO. 520S-19EX-SM 1 OF 2</p>

MATERIALS LIST						
LABEL	ITEM	SIZE				
	BACKFLOW PREVENTER SIZE	3"	4"	6"	8"	10"
A	COUPLING (WHEN REQUIRED)	3"	4"	6"	8"	10"
B	PIPE SPOOL PE X PE D.I.P.	3"	4"	6"	8"	10"
C	90° ELBOW MJ D.I.P.	3"	4"	6"	8"	10"
D	RESILIENT SEATED GATE VALVE. RISING STEM VALVE FOR FIRE LINE CONNECTION AND NON-RISING STEM VALVE FOR NON FIRE LINE CONNECTION.	3"	4"	6"	8"	10"
E	PIPE SPOOL PE X FL	3"	4"	6"	8"	10"
F	90° ELBOW FL	3"	4"	6"	8"	10"
OPTIONAL ITEMS						
G	ADJUSTABLE METAL PIPE SUPPORT WITH 1" ADJUSTING ROD	OPTIONAL				
H	8"X8"X8" CONCRETE BLOCKS WITH MORTAR (TOTAL NUMBER OF BLOCKS VARIES ON HEIGHT)	OPTIONAL				
I	16"X16"X"A" CONCRETE THRUST BLOCK/FOUNDATION (DIMENSION "A" VARIES ON SIZE OF ASSEMBLY)	OPTIONAL				

NOTES:

1. FIRE LINES REQUIRE A DETECTOR ASSEMBLY ON THE BACKFLOW DEVICE.
2. OPTIONAL ITEMS MAY BE REQUIRED TO SUPPORT WEIGHT OF BACKFLOW PREVENTER.
3. BACKFLOW PREVENTER MUST BE PROTECTED FROM WEATHER.
4. BACKFLOW PREVENTER SHOULD BE AS CLOSE AS POSSIBLE TO SERVICE CONNECTION ON PROPERTY OWNER SIDE OF EASEMENT OR PROPERTY LINE.
5. DUCTILE IRON PIPING IS RECOMMENDED FROM METER VAULT TO BACKFLOW PREVENTER.
6. A UNMETERED FIRE LINE WILL USE DETAIL 520S-WMT-SM WITH TAP SIZE EQUAL TO BACKFLOW PREVENTER SIZE TO CONNECT TO CITY WATER LINE.

The City of San Marcos Engineering and Capital Improvements	CURRENT AS OF 1/1/2022	DOUBLE CHECK ASSEMBLY 3" - 10"	
RECORD COPY SIGNED BY <u>LAURIE MOYER, P.E.</u>	1/1/2022 ADOPTED	THE ARCHITECT/ENGINEER ASSUMES RESPONSIBILITY FOR APPROPRIATE USE OF THIS STANDARD.	STANDARD NO. 520S-19EX-SM 2 OF 2