




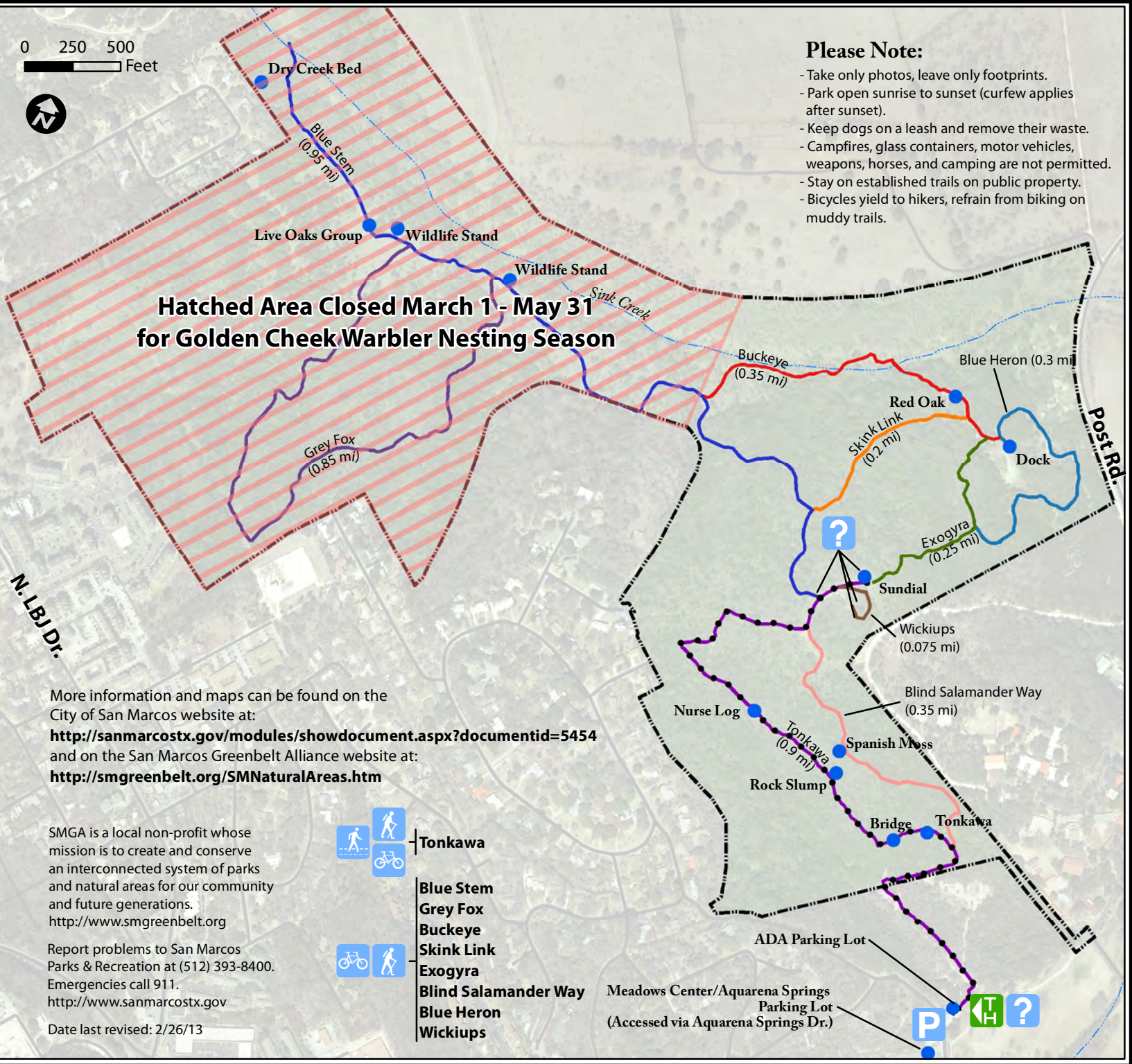
Spring Lake Preserve

Natural Area

Legend:

-  Trailhead
-  Hiking Trail
-  Bicycle Trail
-  Parking Area
-  Accessible Trail
-  Information Kiosk

-  Greenspace Limits
-  Accessible Trail
-  Point of Interest



Please Note:

- Take only photos, leave only footprints.
- Park open sunrise to sunset (curfew applies after sunset).
- Keep dogs on a leash and remove their waste.
- Campfires, glass containers, motor vehicles, weapons, horses, and camping are not permitted.
- Stay on established trails on public property.
- Bicycles yield to hikers, refrain from biking on muddy trails.

**Hatched Area Closed March 1 - May 31
for Golden Cheek Warbler Nesting Season**

More information and maps can be found on the City of San Marcos website at:

<http://sanmarcostx.gov/modules/showdocument.aspx?documentid=5454>

and on the San Marcos Greenbelt Alliance website at:






<http://smgreenbelt.org/SMNaturalAreas.htm>

SMGA is a local non-profit whose mission is to create and conserve an interconnected system of parks and natural areas for our community and future generations.
<http://www.smgreenbelt.org>

Report problems to San Marcos Parks & Recreation at (512) 393-8400. Emergencies call 911.

<http://www.sanmarcostx.gov>

Date last revised: 2/26/13

-  Tonkawa
-  Blue Stem
-  Grey Fox
-  Buckeye
-  Skink Link
- Exogyra
- Blind Salamander Way
- Blue Heron
- Wickiups

ADA Parking Lot
Meadows Center/Aquarena Springs Parking Lot
(Accessed via Aquarena Springs Dr.)